

**0-15 Watts, Switchmode, Single Output, 5V@ 3A (2.2"x3.9")
Open Frame, Universal Input, ITE Class I**

Part Number Ordering System (See Page 224)

**ELECTRICAL SPECIFICATIONS:****INPUT VOLTAGE:**

90 VAC TO 264 VAC

INPUT CURRENT:

< 0.5 A RMS AT 90 VAC INPUT

INPUT FREQUENCY:

47 HZ - 63 HZ

OUTPUT VOLTAGE:

+ 5VDC @ 0-3.0A

OUTPUT CURRENT:

NO MINIMUM LOAD REQUIRED

OUTPUT POWER (RATED):

15 WATTS MAX

OUTPUT RIPPLE (PEAK TO PEAK):

< 1% TYP

OUTPUT REGULATION (LINE/LOAD):

± 2 % FOR MAIN OUTPUT, MEASURED AT O/P CONNECTOR

LINE REGULATION:

± 0.5 % MAX AT FULL LOAD

ADJUSTABILITY:

+10, -5% OUTPUT VOLTAGE

REMOTE SENSING (OPTION):

PROVIDES REGULATION WITHIN ± 1% OF NOMINAL VOLTAGE OF MAIN OUTPUT AT LOAD LEVEL. FOR 3.3V SINGLE OUTPUT, REMOTE IS REQUIRED.

TURN ON/ TURN OFF OVERSHOOT:

4% MAX 500uS MAX RECOVERY TIME FOR 25% STEP LOAD

TURN-ON DELAY:

1 SEC MAX

HOLD-UP TIME:

16 m SEC MIN AT NOMINAL INPUT AND FULL LOAD

INRUSH CURRENT:

20 A MAX AT COLD START FOR N.A. (40A FOR EURO)

EFFICIENCY:

75 % TYPICAL

SWITCHING FREQUENCY:

100 KHZ TYPICAL

OVER-VOLTAGE PROTECTION:

VOLTAGE LIMITED LESS 130% OF NOMINAL VOLTAGE

OVER-CURRENT / SHORT CIRCUIT:

HICCUP WITH AUTO RECOVERY TO 1.1 - 1.3 IO

OTHER PROTECTION:

INPUT FUSING

SAFETY APPROVALS:

UR TO UL 60950, C-UR TO 22.2 # 950, TUV TO EN 60950, CE CLASS I & II

DIELECTRIC WITHSTAND VOLTAGE:

4242VDC (3000 VAC) PRIMARY-SECONDARY;1500 VAC PRIMARY- GROUND

LEAKAGE CURRENT:

≤ 0.25 mA

LINE SURGE:

EN 61000-4-5 LEVEL 4

EMI:

COMPLIES WITH EN55022, CLASS B AND FCC PART 15 CLASS B WHEN TESTED WITH A RESISTIVE LOAD, BOTH CONDUCTED AND RADIATED

CE MARK:

TESTED TO COMPLY WITH EN61000-3-2 EN61000-3-3, AND EN50082-1, INCLUDING EN61000-4-2 (SYSTEM LEVEL), EN61000-4-3, EN61000-4-4, EN61000-4-5, EN61000-4-6, EN61000-4-11, LEVEL 4.

MTBF:

GREATER THAN 50,000 HOURS AT 25°C AMBIENT TEMPERATURE

OPERATING TEMPERATURE:

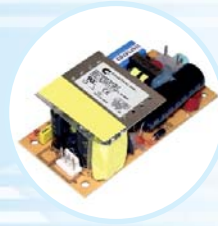
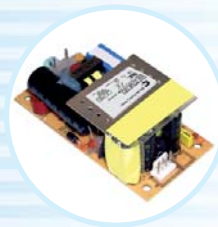
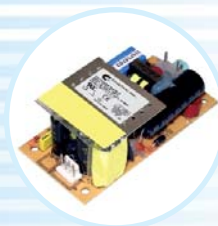
0° C TO 40° C

STORAGE TEMPERATURE:

-40° C TO 80° C

HUMIDITY:

0% TO 90% RELATIVE HUMIDITY

**OUTPUT VOLTAGE / CURRENT:**

MODEL NUMBER	OUTPUT VOLTAGE (VDC)	OUTPUT CURRENT (mA)	RATED OUTPUT POWER (W)
GT-21098-1505	+ 5.0	0 - 3.0	0 - 15

SPECIFICATIONS MAY CHANGE WITHOUT PRIOR NOTICE. CONSULT GLOBTEK CUSTOMER SERVICE FOR LATEST SPECIFICATIONS.



ISO 9001:2000
REGISTERED

GT-21098 SERIES 15W



0-15 Watts, Switchmode, Single Output, 5V@ 3A (2.2"x3.9")
Open Frame, Universal Input, ITE Class I

Part Number Ordering System (See Page 224)



FOR INDOOR USE ONLY



MECHANICAL CONFIGURATION:

INPUT CONNECTOR:

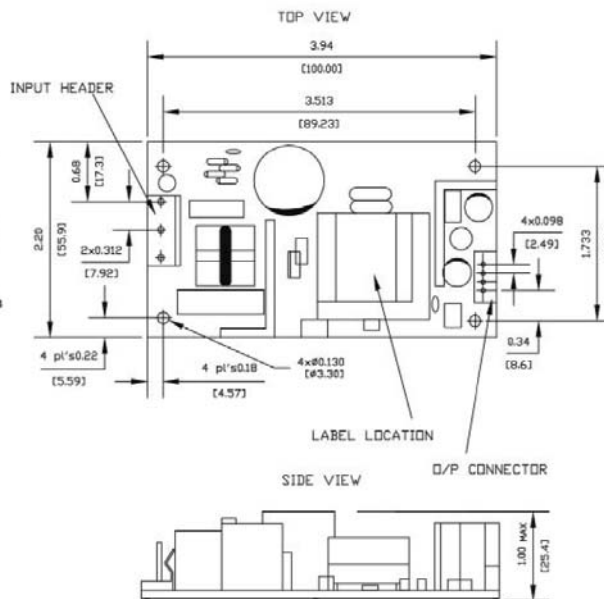
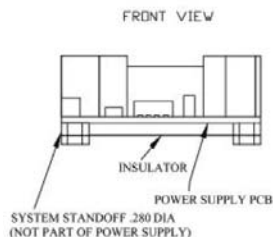
SQUARE PIN LOCKING HEADERS, WITH .312(7.92) BETWEEN CONDUCTORS, .045 (1.14) SQUARE PINS, TIN PLATED UL 94V-0 RATED NYLON HOUSING, MOLEX: 09-65-2038 (3 CIRCUITS, WITH 1 PIN REMOVED FOR CLASS II). HEADER MATES WITH MOLEX NO. 2139 CONNECTOR OR EQUIVALENTS.

OUTPUT CONNECTOR:

OPEN FRAME: 4 PIN STRAIGHT SQUARE PIN FULLY SHROUDED HEADER, MOLEX: 35312-0410 UL 94V-0 RATED NYLON HOUSING; .098(2.50) PITCH BETWEEN CONDUCTORS, .025(.64) SQUARE PINS, TIN PLATED, HEADER MATCH WITH MOLEX # 35155 CONNECTORS OR EQUIVALENT.

OPTION:

10 MIL 94V-0 FIBER
GLASS (2.17 X 3.90) INCH,
W/4HOLES MATCHING
MOUNTING HOLE
POSITIONS, TERMINAL
BOARD WITH RTV
UNDERNEATH THE
POWER PC BOARD IN 6
PLACES.



SPECIFICATIONS MAY CHANGE WITHOUT PRIOR NOTICE. CONSULT GLOBTEK CUSTOMER SERVICE FOR LATEST SPECIFICATIONS.