

Delivering leading edge, innovative power solutions for more than 30 years....

Model:GT-91087

April 10, 2020

## PoE Powered Device (PD) Dc/DC converter providing 5-48Vdc meeting IEEE802.3af

### Information

Model Number	GT-91087
Description	GT-91087, POE PD Module DC/DC, PCB Mounted/DIP, Power Over Ethernet Powered Device Converter (IEEE802.3af PoE PD) Power Supply AC Adaptor, , Input Rating: 36-60 VDC, Pin 1: N/C, Pin 2,3:-V, Pin 4,5: +V, Output Rating: 15.4 Watts, Power rating with convection cooling (W) , 5-24V in 0.1V increments, Approvals: RoHS; China RoHS;

### Model Picture



### Agency Documents

CE EC-Declaration	<a href="https://www.globtek.com/pdf/ec_declaration/a0O3000007P7YrEAK">https://www.globtek.com/pdf/ec_declaration/a0O3000007P7YrEAK</a>
RoHS/RoHS2 Declaration	<a href="https://www.globtek.com/pdf/rohs_cert/a0O3000007P7YrEAK">https://www.globtek.com/pdf/rohs_cert/a0O3000007P7YrEAK</a>
REACH Declaration	<a href="https://www.globtek.com/pdf/iso_certificates/REACH.pdf">https://www.globtek.com/pdf/iso_certificates/REACH.pdf</a>
Conflict Minerals Declaration	<a href="https://www.globtek.com/pdf/conflict-minerals.pdf">https://www.globtek.com/pdf/conflict-minerals.pdf</a>

Delivering leading edge, innovative power solutions for more than **30** years....

Model:GT-91087

April 10, 2020

**MODEL PARAMETERS**

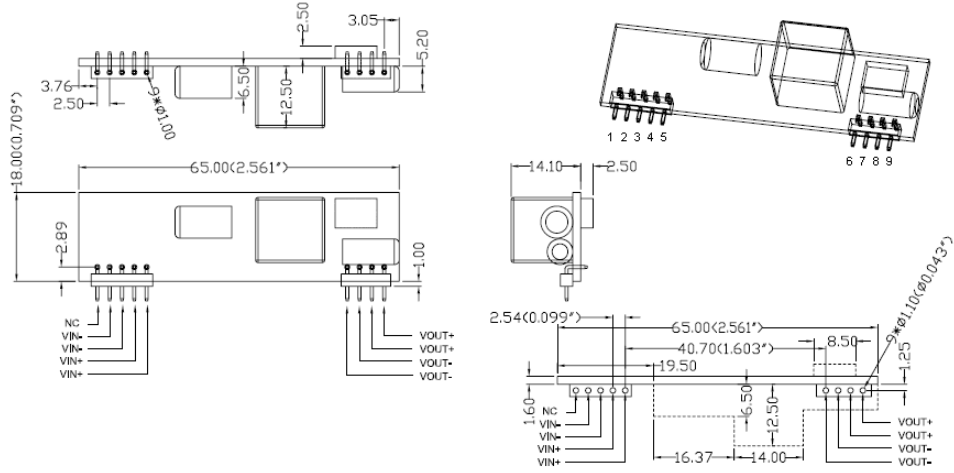
Type	PCB Mounted/DIP
Technology	Power Over Ethernet Powered Device Converter (IEEE802.3af PoE PD) Power Supply AC Adaptor
Category	POE PD Module DC/DC
Input Voltage	36-60 VDC
I/P Amps (A)	0.5A
Wattage (W)	15.4
Vout Range (V)	5-24
Efficiency Level	
Ingress Protection	
Size (mm)	65*18*14

Delivering leading edge, innovative power solutions for more than 30 years....

Model:GT-91087

April 10, 2020

# ENCLOSURE



Delivering leading edge, innovative power solutions for more than **30** years....

Model:GT-91087

April 10, 2020

**RATING TABLE**

Model Number	Voltage	Amps(A)	Watts(W)	RFQ
GT-91087-1205	5 V	2.4	12.00	<a href="#">RFQ</a>
GT-91087-1512	12 V	1.28	15.36	<a href="#">RFQ</a>
GT-91087-1513	13 V	1.18	15.34	<a href="#">RFQ</a>
GT-91087-1514	14 V	1.1	15.40	<a href="#">RFQ</a>
GT-91087-1515	15 V	1.02	15.30	<a href="#">RFQ</a>
GT-91087-1516	16 V	0.96	15.36	<a href="#">RFQ</a>
GT-91087-1517	17 V	0.91	15.47	<a href="#">RFQ</a>
GT-91087-1518	18 V	0.83	14.94	<a href="#">RFQ</a>
GT-91087-1519	19 V	0.81	15.39	<a href="#">RFQ</a>
GT-91087-1520	20 V	0.77	15.40	<a href="#">RFQ</a>
GT-91087-1521	21 V	0.73	15.33	<a href="#">RFQ</a>
GT-91087-1522	22 V	0.7	15.40	<a href="#">RFQ</a>
GT-91087-1523	23 V	0.67	15.41	<a href="#">RFQ</a>
GT-91087-1524	24 V	0.64	15.36	<a href="#">RFQ</a>

Model:GT-91087

April 10, 2020

## SPECIFICATIONS

### A) ELECTRICAL SPECIFICATIONS:

01. DC Input Voltage: 36 – 60V
02. Output Regulation: +/- 5% measured at the output connector
03. Line Voltage Regulation: +/- 0.2% typical measured at the output connector
04. Output Ripple (Vp-p): 1% or 100mV max, measured at 20 MHz bandwidth with 0.1 uf ceramic capacitor in parallel with a low impedance 47 uf electrolytic capacitor connected at the output
05. Switching Frequency: 100 KHz typical
06. Efficiency : 80% typ

### B) PROTECTION

01. Under Voltage Lockout: 30Vdc
02. Short Circuit: Protected unit will auto recover upon removal of fault
03. Current Limiting: 110% to 175% of output rating
04. Thermal: Internally protected against over-temperature conditions

### C) SAFETY & EMC

01. Isolation Voltage : 1000Vdc
02. Isolation Resistance :100M ohms (min)
03. Designed to UL/EN/IEC 60950-1
04. Meet FCC Class B standard
05. Meet EN55022 Class B standard

### D) OTHER:

01. MTBF: 200,000 Hours @ 25°C ambient temperature
02. Operating Temperature: -15°C to 65°C ambient temperature
03. Humidity: 0% to 90% relative humidity
04. Storage Temperature: -40°C to 85°C
05. Cooling: Free air cooling
06. Interoperability: Complies with IEEE 802.3 AF, tested by UNH-iOL
07. Input Set Classification Resistance : 24.9K ohms

### E) ENCLOSURE

01. SIZE : 68\*14\*19 (L\*W\*H)m/m
02. Markings: Label and/or Pad Printed and/or Molded in the case

### F) OPTIONS

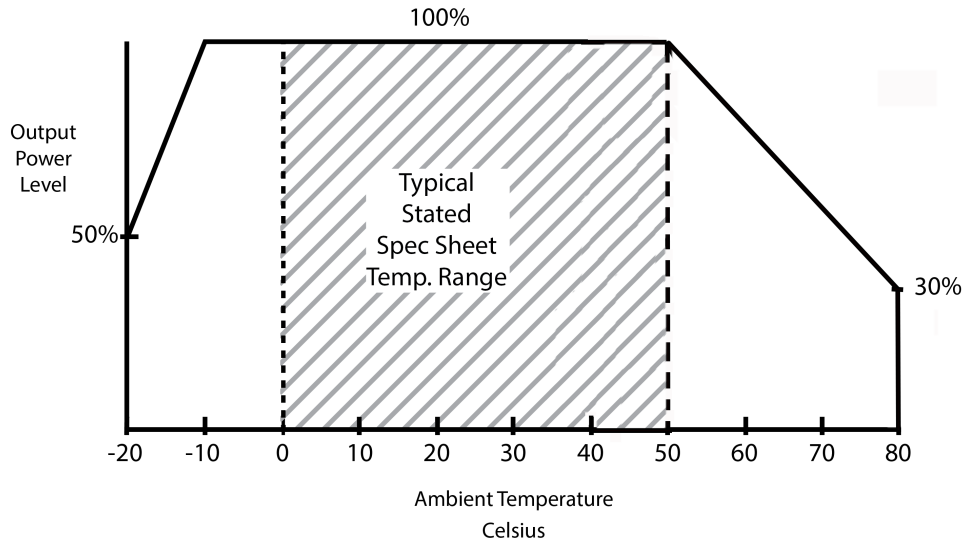
01. Tighter output voltage regulation, +/- 2% or +/-3%
02. Reduced Vp-p Output Ripple
03. Custom Output Voltage, in 0.1V increment

Delivering leading edge, innovative power solutions for more than 30 years....

Model:GT-91087

April 10, 2020

### DERATING CURVE



Delivering leading edge, innovative power solutions for more than **30** years....

Model:GT-91087

April 10, 2020

**INPUT CONFIGURATION**

Description	Pin 1: N/C, Pin 2,3:-V, Pin 4,5: +V
-------------	-------------------------------------

Delivering leading edge, innovative power solutions for more than **30** years....

Model:GT-91087

April 10, 2020

## Approvals

Logo	Description
	CHINA SJ/T 11364-2014, China RoHS Chart: <a href="http://en.globtek.com/globtek-rohs.php">http://en.globtek.com/globtek-rohs.php</a>
RoHS	Specifications of directive 2011/65/EU Annex VI (ROHS-2) with amendment 2015/863-EU (ROHS-3) <a href="http://www.ce-mark.com/Rohs%20final.pdf">http://www.ce-mark.com/Rohs%20final.pdf</a>