

Delivering leading edge, innovative power solutions for more than 30 years....

Model:GTM41134-WWVV-F

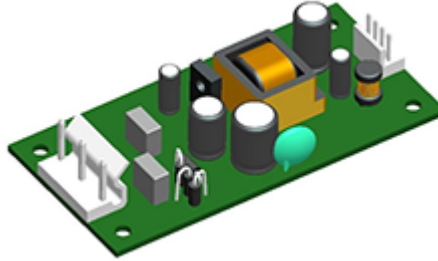
January 16, 2022

## GTM41134-WWVV-F

### Information

Model Number	GTM41134-WWVV-F
Description	GTM41134-WWVV-F, Medical Power Supply, 60601-1-4th Ed. , Open Frame/Internal, Regulated Switchmode AC-DC Power Supply AC Adaptor, , Input Rating: 100-240V~, 50-60 Hz, Molex 09-65-2058 5 Position Header Pin 1: Earth, Pin 2: Removed, PIN 3: Neutral, Pin 4: removed, Pin 5: Line, Output Rating: 6 Watts, Power rating with convection cooling (W) , 3.3-48V in 0.1V increments, Approvals: UKCA; CB 62368; S-Mark 62368; Conforms to 62368-1; ETL 62368; LPS 60950; CE; EAC; WEEE; VCCI; China RoHS; RoHS; Ukraine; Book 60601; CB 60601-1 2MOPP; PSE; Level V; RCM;

### Model Picture



Agency Documents	<a href="http://www.globtek.info/certs/GTM41134/">http://www.globtek.info/certs/GTM41134/</a>
CE EC-Declaration	<a href="https://www.globtek.com/pdf/ec_declaration/a0Oa000000MEXnIEAH">https://www.globtek.com/pdf/ec_declaration/a0Oa000000MEXnIEAH</a>
RoHS/RoHS2 Declaration	<a href="https://www.globtek.com/pdf/rohs_cert/a0Oa000000MEXnIEAH">https://www.globtek.com/pdf/rohs_cert/a0Oa000000MEXnIEAH</a>
REACH Declaration	<a href="https://www.globtek.com/pdf/iso_certificates/REACH.pdf">https://www.globtek.com/pdf/iso_certificates/REACH.pdf</a>
Conflict Minerals Declaration	<a href="https://www.globtek.com/pdf/conflict-minerals.pdf">https://www.globtek.com/pdf/conflict-minerals.pdf</a>

Delivering leading edge, innovative power solutions for more than **30** years....

Model:GTM41134-WWVV-F

January 16, 2022

**MODEL PARAMETERS**

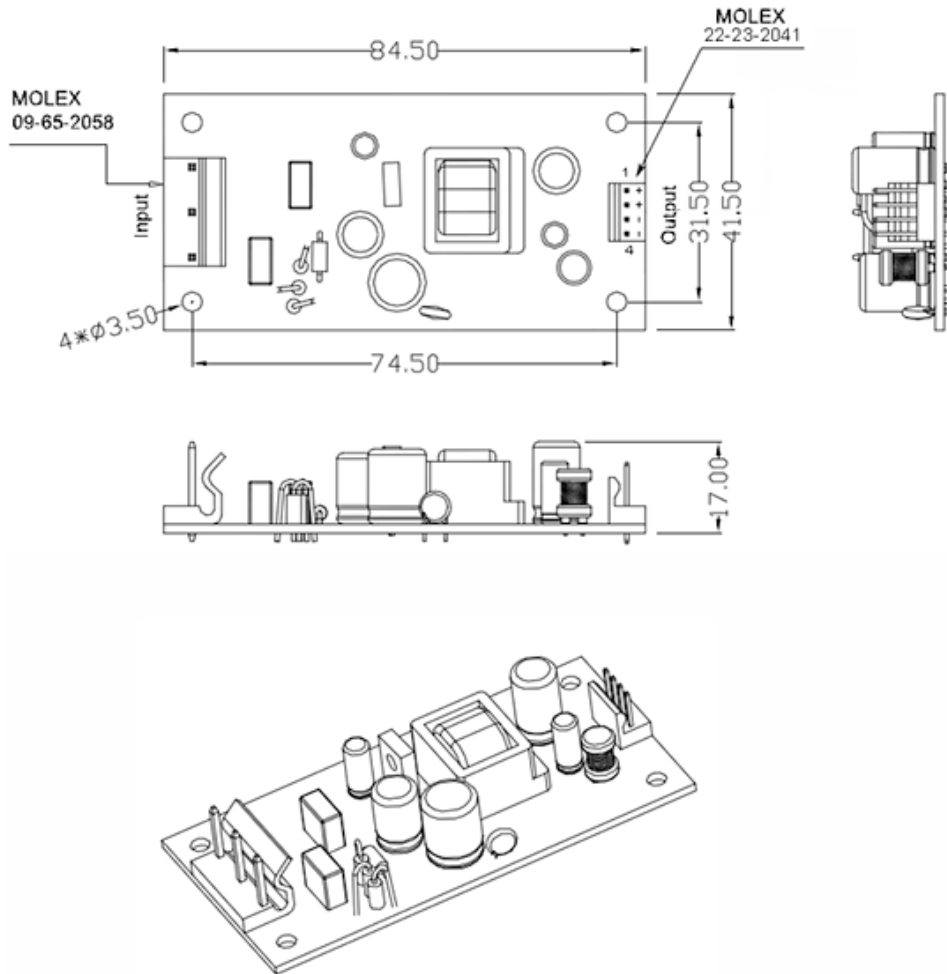
Type	Open Frame/Internal
Technology	Regulated Switchmode AC-DC Power Supply AC Adaptor
Category	Medical Power Supply
Input Voltage	100-240V~, 50-60 Hz
I/P Amps (A)	0.6A Max
Wattage (W)	6.0
Vout Range (V)	3.3-48
Efficiency Level	N/A
Ingress Protection	
Size (mm)	84.5*41.5*17.0

Delivering leading edge, innovative power solutions for more than 30 years....

Model:GTM41134-WVVV-F

January 16, 2022

# ENCLOSURE



Delivering leading edge, innovative power solutions for more than 30 years....

Model:GTM41134-WVVV-F

January 16, 2022

**RATING TABLE**

Model Number	Voltage	Amps(A)	Watts(W)	RFQ
GTM41134-0603-F	3.3 V	1.8	5.94	<a href="#">RFQ</a>
GTM41134-0606-1.0-F	5 V	1.2	6.00	<a href="#">RFQ</a>
GTM41134-0606-F	6 V	1	6.00	<a href="#">RFQ</a>
GTM41134-0612-5.0-F	7 V	0.85	5.95	<a href="#">RFQ</a>
GTM41134-0612-3.0-F	9 V	0.66	5.94	<a href="#">RFQ</a>
GTM41134-0612-F	12 V	0.5	6.00	<a href="#">RFQ</a>
GTM41134-0615-F	15 V	0.4	6.00	<a href="#">RFQ</a>
GTM41134-0618-2.0-F	16 V	0.375	6.00	<a href="#">RFQ</a>
GTM41134-0618-F	18 V	0.33	5.94	<a href="#">RFQ</a>
GTM41134-0624-5.0-F	19 V	0.31	5.89	<a href="#">RFQ</a>
GTM41134-0624-4.0-F	20 V	0.3	6.00	<a href="#">RFQ</a>
GTM41134-0624-F	24 V	0.25	6.00	<a href="#">RFQ</a>
GTM41134-0636-2.5-F	33.5 V	0.179	6.00	<a href="#">RFQ</a>
GTM41134-0636-F	36 V	0.16	5.76	<a href="#">RFQ</a>
GTM41134-0648-F	48 V	0.125	6.00	<a href="#">RFQ</a>

## SPECIFICATIONS

### A) ELECTRICAL SPECIFICATIONS:

01. Input Voltage: Specified 90-264 Vac, Nameplate rated: 100-240Vac
02. Input Frequency: Specified 47-63 Hz, Nameplate rated 50-60Hz
03. Output Current: Current limited to rated output current with tolerance of +/-10%
04. Output Regulation: +/- 5% measured at the output connector
05. Line Voltage Regulation: +/- 1% typical measures at full load
06. Output Ripple (Vp-p): 1% or 150 mV whichever is greater measured at 20 MHz bandwidth with 0.1 uf ceramic capacitor in parallel with 10 uf electrolytic capacitor connected at the end of output connector at nominal line
07. Turn-On/Turn-Off Overshoot: 5% maximum, 1mS typical recovery time for 25% step load
08. Turn-On Delay: 1 second typical
09. Hold-Up Time: 8mS typical @ nominal input voltage & full load
10. Inrush Current: 30A typical @ 115Vac input ; 60A typical @ 230Vac input
11. Switching Frequency: 65 KHz typical

### B) PROTECTION

1. Over-Voltage: Unit will recover upon removal of fault
2. Short Circuit: Electronically Protected, unit will recover upon removal of fault
3. Input Protection: Input line fusing

### C) SAFETY

1. Dielectric Withstand Voltage: Input-Output: 5656Vdc, (2 MOPP)
2. Earth Leakage Current: N/A for Class II units, there is no PE Ground pin, so Earth Leakage current is not measured
3. Touch Current: Maximum allowed values: 100uA NC(Normal condition) 500uA SFC(single fault condition)
4. Means of Protection: 2 x MOPP
5. Primary to Secondary Bridging Capacitor: Standard configuration provided without bridging capacitors, Two (2) \* Y1 type capacitors in series is available as an option upon customer request. If option employed, it is to be noted in the product deviation section of this specification document.

### D) OTHER:

1. MTBF: 200,000 hours @ 25°C ambient temperature
  2. Operating Temperature: 0°C to 40°C ambient temperature
  3. Humidity: 0% to 95% relative humidity (RFP RFI-33542-1)
  4. Storage Temperature: -20°C to 80°C
- Normal performance after 2h recovery time at the room temperature without connection to mains (RFP RFI-33542-1)

### E) ENCLOSURE

1. Upper Housing: High impact plastic, 94V0 polycarbonate, non-vented
2. Lower Housing: High impact plastic, 94V0 polycarbonate, non-vented
3. Size: 43.5 x 74.0 x 35.3mm +/- 1.0

Delivering leading edge, innovative power solutions for more than **30** years....

Model:GTM41134-WVVV-F

January 16, 2022

## DERATING CURVE

---

Delivering leading edge, innovative power solutions for more than 30 years....

Model:GTM41134-WVVV-F

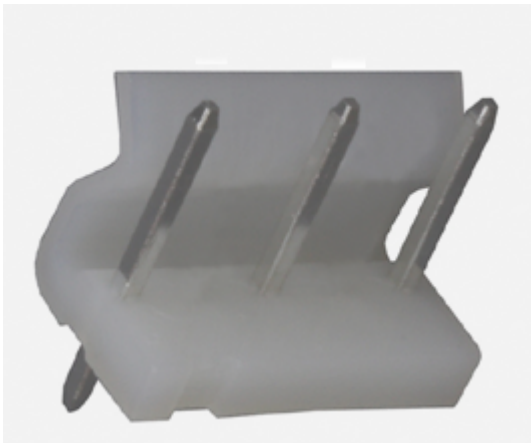
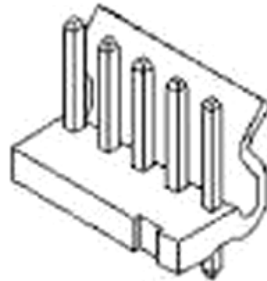
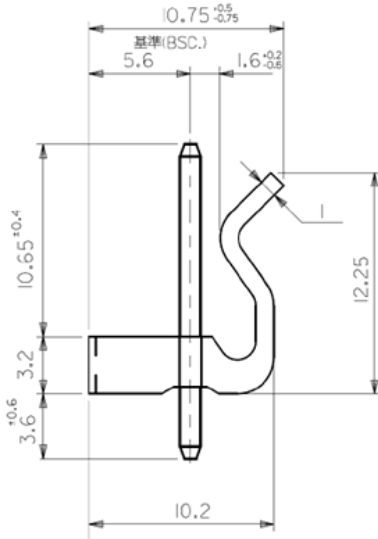
January 16, 2022

### INPUT CONFIGURATION

Description Molex 09-65-2058 5 Position Header Pin 1: Earth, Pin 2: Removed, PIN 3: Neutral, Pin 4: removed, Pin 5: Line

Document: [http://www.molex.com/pdm\\_docs/sd/009652058\\_sd.pdf](http://www.molex.com/pdm_docs/sd/009652058_sd.pdf)

Catalog Page: [http://www.molex.com/molex/products/datasheet.jsp?part=active/0009652058\\_PCB\\_HEADERS.xml](http://www.molex.com/molex/products/datasheet.jsp?part=active/0009652058_PCB_HEADERS.xml)



Mates With Part(s):








**5195 SPOX™ Crimp Housing, 5239 KK® Crimp Housing**

Delivering leading edge, innovative power solutions for more than 30 years....

Model:GTM41134-WVVV-F

January 16, 2022

## Approvals


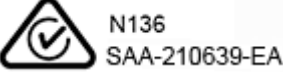





Logo	Description
	60601-1 3rd Operating Instructions
No Logo Applicable	CB report IEC60601-1 2005 A1+C1+C2 2016-2-4 and or EN 60601-1:2006 3.1rd Edition 2xMOPP
No Logo Applicable	CB for IEC 62368-1:2014 (Second Edition)
	CE Certification CE Mark: tested to comply with EN 55032.2012+AC.2013 EN 61000-3-2.2014 EN 61000-3-3.2013 EN 60601-1-2.2015 EN 55024.2010
	Audio/Video, Information And Communication Technology Equipment - Part 1: Safety Requirements [UL 62368-1:2014 Ed.2] Audio/Video, Information And Communication Technology Equipment - Part 1: Safety Requirements [CSA C22.2#62368-1:2014 Ed.2]
	CHINA SJ/T 11364-2014, China RoHS Chart: <a href="http://en.globtek.com/globtek-rohs.php">http://en.globtek.com/globtek-rohs.php</a>
Conforms to UL STD. 62368-1 Certified to CSA STD C22.2 NO.62368-1	Conforms to UL STD. 62368-1 Certified to CSA STD C22.2 NO.62368-1
	Certification # TC RU AR46.B.72092 Custom Union of Russia, Belarus and Kazakhstan for GT(M)41134
	Indoor Use Only - Mark is on the label or Molded in the case
<b>EFFICIENCY LEVEL</b> 	Efficiency: complies to section 301 of Energy Independence and Security Act (EISA) complies with Energy Star tier 2 (North America), ECP tier 2 (China), MEPS tier 2 (Australia), Code of Conduct (Europe)
LPS	Limited Power Source 60950



Delivering leading edge, innovative power solutions for more than **30** years....

Model:GTM41134-WVVV-F

January 16, 2022

 GlobTek, Inc.	JAPAN TUV Rheinland-PSE GlobTek Inc to J60950-1(H26) , J55022(H22),J3000(H25).Please follow the procedure listed in the following link for proper import to Japan: <a href="http://en.globtek.com/importing-to-japan.php">http://en.globtek.com/importing-to-japan.php</a> .
	RCM certificate SAA210639 GTM41134-F; Australia and New Zealand Regulatory Compliance, Mark ( <a href="http://rcm.standards.org.au/rcmfaq/rcmfaq.htm">http://rcm.standards.org.au/rcmfaq/rcmfaq.htm</a> )
RoHS	Specifications of directive 2011/65/EU Annex VI (ROHS-2) with amendment 2015/863-EU (ROHS-3) <a href="http://www.ce-mark.com/Rohs%20final.pdf">http://www.ce-mark.com/Rohs%20final.pdf</a>
	S-Mark Certificate EN 62368-1:2014 + A11 ( <a href="http://www.intertek.com/marks/s/">http://www.intertek.com/marks/s/</a> )
	UKCA Certification
	Ukraine UKRSepra (Document: <a href="http://www.globtek.com/html/iso_certificates/GT_Ukraine.pdf">www.globtek.com/html/iso_certificates/GT_Ukraine.pdf</a> )
	Japan: Voluntary Control Council for Interference (VCCI)
	WEEE: Complies with EU 2012/19/EU ( <a href="http://ec.europa.eu/environment/waste/weee/index_en.htm">http://ec.europa.eu/environment/waste/weee/index_en.htm</a> ) Mark is on the label or Molded in the case